

## EVOLUTION DES ABATTAGES GROS BOVINS SEMAINE 14

### SYNTHESE DES DONNEES NORMABEV ABATTAGES DE GROS BOVINS (ABATTOIRS DE + 1.500 TONNES)

|              | ANNEE       | N-1     |         |         |         |         | N       |         |         |         |         | ANNEE       |              |
|--------------|-------------|---------|---------|---------|---------|---------|---------|---------|---------|---------|---------|-------------|--------------|
|              | SEMAINE     | 2025-10 | 2025-11 | 2025-12 | 2025-13 | 2025-14 | 2026-10 | 2026-11 | 2026-12 | 2026-13 | 2026-14 | SEMAINE     |              |
| GROS BOVINS  | TETES       | 56330   | 56091   | 56344   | 55974   | 58230   | 53176   | 54796   | 55572   | 53970   | 53514   | TETES       | GROS BOVINS  |
|              | POIDS MOYEN | 392,71  | 391,49  | 392,31  | 392,23  | 393,31  | 397,37  | 398,10  | 399,09  | 403,50  | 401,00  | POIDS MOYEN |              |
|              | TONNAGE     | 22122   | 21959   | 22104   | 21955   | 22902   | 21131   | 21815   | 22178   | 21777   | 21459   | TONNAGE     |              |
| JB LAIT      | TETES       | 1423    | 1412    | 1434    | 1216    | 1383    | 1040    | 1334    | 1322    | 1303    | 1435    | TETES       | JB LAIT      |
|              | POIDS MOYEN | 364,83  | 367,61  | 362,43  | 370,38  | 365,75  | 372,99  | 372,16  | 373,90  | 368,50  | 373,58  | POIDS MOYEN |              |
|              | TONNAGE     | 519     | 519     | 520     | 450     | 506     | 388     | 496     | 494     | 480     | 536     | TONNAGE     |              |
| JB VIANDE    | TETES       | 12215   | 11700   | 11842   | 11728   | 11466   | 10975   | 11726   | 11868   | 11635   | 11235   | TETES       | JB VIANDE    |
|              | POIDS MOYEN | 443,12  | 441,55  | 444,88  | 441,83  | 442,66  | 450,71  | 453,23  | 448,32  | 451,33  | 453,36  | POIDS MOYEN |              |
|              | TONNAGE     | 5413    | 5166    | 5268    | 5182    | 5076    | 4947    | 5315    | 5321    | 5251    | 5093    | TONNAGE     |              |
| VACHE LAIT   | TETES       | 11777   | 11520   | 11381   | 11369   | 12060   | 11410   | 11372   | 10964   | 10400   | 11077   | TETES       | VACHE LAIT   |
|              | POIDS MOYEN | 323,85  | 323,43  | 322,95  | 324,10  | 325,07  | 329,25  | 327,13  | 327,20  | 329,97  | 330,36  | POIDS MOYEN |              |
|              | TONNAGE     | 3814    | 3726    | 3675    | 3685    | 3920    | 3757    | 3720    | 3587    | 3432    | 3659    | TONNAGE     |              |
| VACHE VIANDE | TETES       | 13297   | 13309   | 13172   | 13403   | 13619   | 11973   | 12015   | 12524   | 12604   | 12056   | TETES       | VACHE VIANDE |
|              | POIDS MOYEN | 431,39  | 431,79  | 432,15  | 431,18  | 434,47  | 440,23  | 439,71  | 440,90  | 446,55  | 440,61  | POIDS MOYEN |              |
|              | TONNAGE     | 5736    | 5747    | 5692    | 5779    | 5917    | 5271    | 5283    | 5522    | 5628    | 5312    | TONNAGE     |              |

|              | ANNEE       | VARIATION MÊME SEMAINE - ANNEE PRECEDENTE |         |          |        |          |        |          |        |          |         | ANNEE       |              |
|--------------|-------------|---|---------|----------|--------|----------|--------|----------|--------|----------|---------|-------------|--------------|
|              | SEMAINE     | 11  |         | 12       |        | 13       |        | 14       |        | 15       |         | SEMAINE     |              |
|              |             | Quantité                                  | %       | Quantité | %      | Quantité | %      | Quantité | %      | Quantité | %       |             |              |
| GROS BOVINS  | TETES       | -3154                                     | -5,60%  | -1295    | -2,31% | -772     | -1,37% | -2004    | -3,58% | -4716    | -8,10%  | TETES       | GROS BOVINS  |
|              | POIDS MOYEN | 5   | 1,19%   | 7        | 1,69%  | 7        | 1,73%  | 11       | 2,87%  | 8        | 1,96%   | POIDS MOYEN |              |
|              | TONNAGE     | -991                                      | -4,48%  | -145     | -0,66% | 74       | 0,33%  | -177     | -0,81% | -1443    | -6,30%  | TONNAGE     |              |
| JB LAIT      | TETES       | -383                                      | -26,91% | -78      | -5,52% | -112     | -7,81% | 87       | 7,15%  | 52       | 3,76%   | TETES       | JB LAIT      |
|              | POIDS MOYEN | 8   | 2,24%   | 5        | 1,24%  | 11       | 3,16%  | -2       | -0,51% | 8        | 2,14%   | POIDS MOYEN |              |
|              | TONNAGE     | -131                                      | -25,28% | -23      | -4,35% | -25      | -4,89% | 30       | 6,61%  | 30       | 5,98%   | TONNAGE     |              |
| JB VIANDE    | TETES       | -1240                                     | -10,15% | 26       | 0,22%  | 26       | 0,22%  | -93      | -0,79% | -231     | -2,01%  | TETES       | JB VIANDE    |
|              | POIDS MOYEN | 8   | 1,71%   | 12       | 2,64%  | 3        | 0,77%  | 10       | 2,15%  | 11       | 2,42%   | POIDS MOYEN |              |
|              | TONNAGE     | -466                                      | -8,61%  | 148      | 2,87%  | 52       | 1,00%  | 69       | 1,34%  | 18       | 0,35%   | TONNAGE     |              |
| VACHE LAIT   | TETES       | -367                                      | -3,12%  | -148     | -1,28% | -417     | -3,66% | -969     | -8,52% | -983     | -8,15%  | TETES       | VACHE LAIT   |
|              | POIDS MOYEN | 5   | 1,67%   | 4        | 1,14%  | 4        | 1,32%  | 6        | 1,81%  | 5        | 1,63%   | POIDS MOYEN |              |
|              | TONNAGE     | -57                                       | -1,50%  | -6       | -0,16% | -88      | -2,40% | -253     | -6,87% | -261     | -6,66%  | TONNAGE     |              |
| VACHE VIANDE | TETES       | -1324                                     | -9,96%  | -1294    | -9,72% | -648     | -4,92% | -799     | -5,96% | -1563    | -11,48% | TETES       | VACHE VIANDE |
|              | POIDS MOYEN | 9   | 2,05%   | 8        | 1,84%  | 9        | 2,02%  | 15       | 3,56%  | 6        | 1,41%   | POIDS MOYEN |              |
|              | TONNAGE     | -465                                      | -8,11%  | -463     | -8,07% | -170     | -3,00% | -151     | -2,61% | -605     | -10,22% | TONNAGE     |              |

|              | ANNEE       | VARIATION SEMAINE PRECEDENTE - MÊME ANNEE |   |          |        |          |        |          |        |          |        | ANNEE       |              |
|--------------|-------------|---|---|----------|--------|----------|--------|----------|--------|----------|--------|-------------|--------------|
|              | SEMAINE     | 10  |   | 11       |        | 12       |        | 13       |        | 14       |        | SEMAINE     |              |
|              |             | Quantité                                  | % | Quantité | %      | Quantité | %      | Quantité | %      | Quantité | %      |             |              |
| GROS BOVINS  | TETES       |   |   | 1620     | 3,05%  | 776      | 1,42%  | -1602    | -2,88% | -456     | -0,84% | TETES       | GROS BOVINS  |
|              | POIDS MOYEN |   |   | 1        | 0,18%  | 1        | 0,25%  | 4        | 1,11%  | -3       | -0,62% | POIDS MOYEN |              |
|              | TONNAGE     |   |   | 684      | 3,24%  | 364      | 1,67%  | -401     | -1,81% | -318     | -1,46% | TONNAGE     |              |
| JB LAIT      | TETES       |   |   | 294      | 28,27% | -12      | -0,90% | -19      | -1,44% | 132      | 10,13% | TETES       | JB LAIT      |
|              | POIDS MOYEN |   |   | -1       | -0,22% | 2        | 0,47%  | -5       | -1,44% | 5        | 1,38%  | POIDS MOYEN |              |
|              | TONNAGE     |   |   | 109      | 27,98% | -2       | -0,44% | -14      | -2,86% | 56       | 11,65% | TONNAGE     |              |
| JB VIANDE    | TETES       |   |   | 751      | 6,84%  | 142      | 1,21%  | -233     | -1,96% | -400     | -3,44% | TETES       | JB VIANDE    |
|              | POIDS MOYEN |   |   | 3        | 0,56%  | -5       | -1,08% | 3        | 0,67%  | 2        | 0,45%  | POIDS MOYEN |              |
|              | TONNAGE     |   |   | 368      | 7,44%  | 6        | 0,12%  | -69      | -1,31% | -158     | -3,00% | TONNAGE     |              |
| VACHE LAIT   | TETES       |   |   | -38      | -0,33% | -408     | -3,59% | -564     | -5,14% | 677      | 6,51%  | TETES       | VACHE LAIT   |
|              | POIDS MOYEN |   |   | -2       | -0,65% | 0        | 0,02%  | 3        | 0,85%  | 0        | 0,12%  | POIDS MOYEN |              |
|              | TONNAGE     |   |   | -37      | -0,98% | -133     | -3,57% | -156     | -4,34% | 228      | 6,64%  | TONNAGE     |              |
| VACHE VIANDE | TETES       |   |   | 42       | 0,35%  | 509      | 4,24%  | 80       | 0,64%  | -548     | -4,35% | TETES       | VACHE VIANDE |
|              | POIDS MOYEN |   |   | -1       | -0,12% | 1        | 0,27%  | 6        | 1,28%  | -6       | -1,33% | POIDS MOYEN |              |
|              | TONNAGE     |   |   | 12       | 0,23%  | 239      | 4,52%  | 107      | 1,93%  | -316     | -5,62% | TONNAGE     |              |

|                        | 2026                        |          |
|------------------------|-----------------------------|----------|
|                        | Semaine                     | Nb Jours |
| <b>Semaine 1</b>       | Du 29/12/2025 au 04/01/2026 |          |
| <b>Pâques</b>          | 15                          | 4        |
| <b>Fête du travail</b> | 18                          | 4        |
| <b>8 mai 1945</b>      | 19                          | 4        |
| <b>Ascension</b>       | 20                          | 4        |
| <b>Pentecôte</b>       | 25                          | 4        |
| <b>Fête nationale</b>  | 29                          | 4        |
| <b>Assomption</b>      | 33                          | 5        |
| <b>Toussaint</b>       | 45                          | 5        |
| <b>Armistice</b>       | 46                          | 4        |
| <b>Noël</b>            | 52                          | 4        |
| <b>Semaine 53</b>      | Sem 53                      |          |

## Variations écarts cumulés 2025 / moyenne (2024, 2023, 2022)

| TYPE_RACIAL  | CAT                  | SEM07         | SEM08         | SEM09         | SEM10         | SEM11         | SEM12         | SEM13         | SEM14         | SEM15         | SEM16         | SEM17          |
|--------------|----------------------|---------------|---------------|---------------|---------------|---------------|---------------|---------------|---------------|---------------|---------------|----------------|
| CROISE       | JB                   | 8,74%         | 7,52%         | 9,02%         | 9,00%         | 8,21%         | 3,44%         | 1,89%         | -1,47%        | -3,35%        | -4,86%        | -3,08%         |
|              | Taureau              | -6,16%        | -13,36%       | -20,88%       | -23,57%       | -23,71%       | -25,00%       | -24,47%       | -22,69%       | -23,31%       | -18,90%       | -17,74%        |
|              | Bœuf                 | -30,41%       | -30,77%       | -16,67%       | -15,38%       | -19,34%       | -15,11%       | -7,12%        | -8,71%        | -8,68%        | -9,69%        | -14,70%        |
|              | Vache                | 0,52%         | -4,04%        | -5,31%        | -7,78%        | -9,54%        | -8,90%        | -7,43%        | -6,54%        | -6,79%        | -6,49%        | -9,00%         |
|              | Génisse              | 2,29%         | 2,61%         | 1,16%         | -0,52%        | 0,16%         | -4,62%        | -2,33%        | -0,60%        | 5,17%         | 1,17%         | -3,20%         |
|              | JB 8-12 mois         | -51,89%       | -46,91%       | -40,46%       | -42,53%       | -40,37%       | -44,69%       | -45,60%       | -48,08%       | -47,22%       | -44,30%       | -45,63%        |
|              | <b>Total CROISE</b>  | <b>-4,20%</b> | <b>-6,73%</b> | <b>-5,98%</b> | <b>-7,62%</b> | <b>-8,60%</b> | <b>-9,67%</b> | <b>-8,25%</b> | <b>-8,47%</b> | <b>-8,26%</b> | <b>-8,47%</b> | <b>-10,24%</b> |
| LAITIER      | JB                   | -8,34%        | -9,49%        | -10,08%       | -9,62%        | -9,44%        | -8,56%        | -9,11%        | -9,44%        | -9,38%        | -9,69%        | -11,01%        |
|              | Taureau              | -10,34%       | -8,65%        | -8,20%        | -6,29%        | -7,62%        | -6,66%        | -8,03%        | -6,52%        | -6,51%        | -7,88%        | -8,14%         |
|              | Bœuf                 | -1,81%        | -1,25%        | -2,07%        | -2,72%        | -2,80%        | -1,59%        | -0,74%        | -0,41%        | 0,44%         | 1,28%         | 0,54%          |
|              | Vache                | -3,71%        | -5,39%        | -5,94%        | -5,80%        | -5,93%        | -6,05%        | -6,34%        | -6,20%        | -6,03%        | -5,94%        | -6,47%         |
|              | Génisse              | 11,30%        | 9,32%         | 8,35%         | 8,66%         | 11,07%        | 11,38%        | 14,23%        | 15,31%        | 15,97%        | 16,12%        | 15,33%         |
|              | JB 8-12 mois         | -34,57%       | -30,71%       | -29,77%       | -28,73%       | -32,37%       | -35,23%       | -35,29%       | -34,20%       | -38,01%       | -35,14%       | -36,29%        |
|              | <b>Total LAITIER</b> | <b>-3,96%</b> | <b>-5,47%</b> | <b>-6,03%</b> | <b>-5,88%</b> | <b>-5,96%</b> | <b>-5,90%</b> | <b>-6,14%</b> | <b>-6,00%</b> | <b>-5,80%</b> | <b>-5,73%</b> | <b>-6,35%</b>  |
| MIXTE        | JB                   | -20,59%       | -21,26%       | -20,07%       | -18,80%       | -18,35%       | -17,47%       | -17,20%       | -17,26%       | -17,63%       | -17,94%       | -18,89%        |
|              | Taureau              | -8,70%        | -4,87%        | -4,02%        | -6,21%        | -5,20%        | -6,12%        | -7,38%        | -7,68%        | -7,63%        | -7,71%        | -7,43%         |
|              | Bœuf                 | -9,09%        | -9,11%        | -7,19%        | -6,28%        | -5,81%        | -6,46%        | -5,54%        | -4,26%        | -3,35%        | -3,06%        | -3,13%         |
|              | Vache                | -8,85%        | -8,85%        | -9,05%        | -9,02%        | -8,79%        | -8,57%        | -8,53%        | -7,62%        | -7,10%        | -6,67%        | -7,19%         |
|              | Génisse              | -0,69%        | 2,73%         | 1,13%         | 3,00%         | 4,48%         | 2,45%         | 2,72%         | 1,69%         | 3,36%         | 1,42%         | 1,84%          |
|              | JB 8-12 mois         | -16,51%       | -15,37%       | -14,12%       | -13,39%       | -15,24%       | -17,98%       | -16,16%       | -16,08%       | -14,13%       | -9,68%        | -10,33%        |
|              | <b>Total MIXTE</b>   | <b>-9,83%</b> | <b>-9,81%</b> | <b>-9,73%</b> | <b>-9,51%</b> | <b>-9,22%</b> | <b>-9,06%</b> | <b>-8,93%</b> | <b>-8,14%</b> | <b>-7,65%</b> | <b>-7,36%</b> | <b>-7,86%</b>  |
| VIANDE       | JB                   | -5,89%        | -5,08%        | -3,45%        | -2,86%        | -3,37%        | -3,25%        | -3,42%        | -3,53%        | -3,34%        | -3,05%        | -3,73%         |
|              | Taureau              | -5,12%        | -4,53%        | -3,65%        | -3,05%        | -3,79%        | -3,48%        | -4,01%        | -3,27%        | -3,13%        | -2,39%        | -3,19%         |
|              | Bœuf                 | 9,20%         | 11,36%        | 12,08%        | 11,96%        | 11,25%        | 10,41%        | 11,33%        | 12,67%        | 14,35%        | 15,39%        | 14,62%         |
|              | Vache                | -4,70%        | -4,67%        | -4,73%        | -4,87%        | -4,90%        | -5,06%        | -4,99%        | -4,47%        | -3,78%        | -3,42%        | -4,30%         |
|              | Génisse              | -0,89%        | 0,06%         | 0,08%         | -0,19%        | -0,06%        | -0,25%        | -0,41%        | 0,40%         | 1,21%         | 1,58%         | 0,90%          |
|              | JB 8-12 mois         | -31,11%       | -30,03%       | -30,90%       | -31,07%       | -32,06%       | -32,27%       | -32,29%       | -32,02%       | -31,91%       | -31,25%       | -32,25%        |
|              | <b>Total VIANDE</b>  | <b>-4,72%</b> | <b>-4,16%</b> | <b>-3,65%</b> | <b>-3,56%</b> | <b>-3,77%</b> | <b>-3,83%</b> | <b>-3,87%</b> | <b>-3,46%</b> | <b>-2,89%</b> | <b>-2,50%</b> | <b>-3,26%</b>  |
| <b>Total</b> | <b>-5,21%</b>        | <b>-5,29%</b> | <b>-5,13%</b> | <b>-5,00%</b> | <b>-5,10%</b> | <b>-5,10%</b> | <b>-5,16%</b> | <b>-4,77%</b> | <b>-4,30%</b> | <b>-4,01%</b> | <b>-4,69%</b> |                |

## Variations écarts cumulés 2026 / 2025

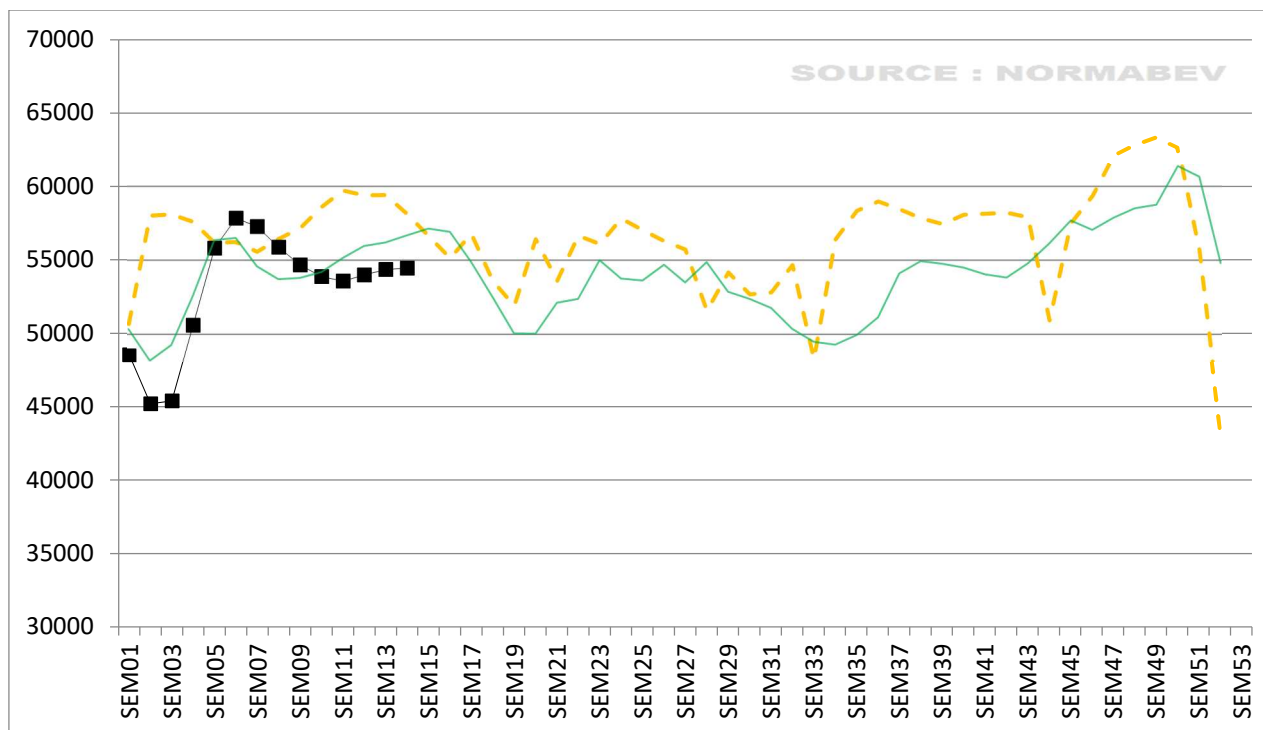
| TYPE_RACIAL  | CAT                  | SEM07        | SEM08         | SEM09         | SEM10         | SEM11         | SEM12         | SEM13         | SEM14         | SEM15         | SEM16 | SEM17 |
|--------------|----------------------|--------------|---------------|---------------|---------------|---------------|---------------|---------------|---------------|---------------|-------|-------|
| CROISE       | JB                   | 29,82%       | 39,31%        | 33,89%        | 25,07%        | 29,92%        | 36,01%        | 32,74%        | 30,06%        |               |       |       |
|              | Taureau              | -10,61%      | 2,99%         | 8,33%         | 16,25%        | 24,72%        | 27,08%        | 22,64%        | 18,80%        |               |       |       |
|              | Bœuf                 | 56,76%       | 78,57%        | 43,48%        | 35,61%        | 41,73%        | 30,43%        | 23,53%        | 21,36%        |               |       |       |
|              | Vache                | 10,29%       | 12,62%        | 10,17%        | 11,75%        | 12,21%        | 9,77%         | 8,67%         | 7,19%         |               |       |       |
|              | Génisse              | -11,94%      | -8,92%        | -4,57%        | -6,28%        | -8,02%        | -7,05%        | -7,17%        | -10,47%       |               |       |       |
|              | JB 8-12 mois         | -11,76%      | -13,95%       | -25,00%       | -23,73%       | -23,08%       | -10,61%       | -10,00%       | -9,72%        |               |       |       |
|              | <b>Total CROISE</b>  |              | <b>12,78%</b> | <b>18,52%</b> | <b>14,65%</b> | <b>13,37%</b> | <b>15,45%</b> | <b>15,47%</b> | <b>13,46%</b> | <b>11,24%</b> |       |       |
| LAITIER      | JB                   | -3,97%       | -2,30%        | -3,40%        | -6,09%        | -6,03%        | -6,20%        | -5,22%        | -4,52%        |               |       |       |
|              | Taureau              | 1,13%        | 0,79%         | -0,31%        | -3,10%        | -0,12%        | -0,33%        | 1,33%         | -0,33%        |               |       |       |
|              | Bœuf                 | 6,24%        | 6,33%         | 7,15%         | 7,69%         | 7,26%         | 8,36%         | 8,14%         | 7,28%         |               |       |       |
|              | Vache                | -0,42%       | 1,48%         | 1,58%         | 1,13%         | 0,92%         | 0,56%         | -0,11%        | -0,69%        |               |       |       |
|              | Génisse              | -3,90%       | -3,15%        | -1,36%        | -2,82%        | -4,55%        | -4,23%        | -7,44%        | -7,39%        |               |       |       |
|              | JB 8-12 mois         | 21,95%       | 12,37%        | -1,75%        | -5,43%        | -10,00%       | -11,18%       | -11,73%       | -12,99%       |               |       |       |
|              | <b>Total LAITIER</b> |              | <b>-0,46%</b> | <b>1,30%</b>  | <b>1,34%</b>  | <b>0,69%</b>  | <b>0,51%</b>  | <b>0,24%</b>  | <b>-0,26%</b> | <b>-0,73%</b> |       |       |
| MIXTE        | JB                   | 4,37%        | 6,27%         | 4,81%         | 3,51%         | 3,14%         | 1,57%         | 1,02%         | 1,56%         |               |       |       |
|              | Taureau              | 13,05%       | 8,05%         | 2,85%         | 5,64%         | 3,10%         | 3,95%         | 4,18%         | 3,80%         |               |       |       |
|              | Bœuf                 | 6,85%        | 6,65%         | 5,25%         | 2,96%         | 2,88%         | 2,89%         | 1,82%         | 2,27%         |               |       |       |
|              | Vache                | 5,98%        | 6,43%         | 6,38%         | 6,14%         | 5,05%         | 4,25%         | 3,38%         | 2,24%         |               |       |       |
|              | Génisse              | 17,26%       | 14,27%        | 13,52%        | 11,22%        | 10,37%        | 10,64%        | 8,82%         | 6,99%         |               |       |       |
|              | JB 8-12 mois         | -14,41%      | -2,99%        | -2,67%        | -5,42%        | -4,49%        | -2,67%        | -4,41%        | -2,80%        |               |       |       |
|              | <b>Total MIXTE</b>   |              | <b>6,15%</b>  | <b>6,57%</b>  | <b>6,23%</b>  | <b>5,71%</b>  | <b>4,76%</b>  | <b>4,00%</b>  | <b>3,14%</b>  | <b>2,28%</b>  |       |       |
| VIANDE       | JB                   | 4,75%        | 4,44%         | 2,31%         | 0,83%         | 0,77%         | 0,72%         | 0,59%         | 0,39%         |               |       |       |
|              | Taureau              | 6,87%        | 7,37%         | 4,87%         | 4,32%         | 3,70%         | 2,58%         | 2,36%         | 2,16%         |               |       |       |
|              | Bœuf                 | 18,08%       | 15,59%        | 13,95%        | 13,15%        | 14,44%        | 15,83%        | 15,21%        | 12,61%        |               |       |       |
|              | Vache                | -6,99%       | -7,64%        | -7,79%        | -8,01%        | -8,16%        | -7,89%        | -7,74%        | -8,02%        |               |       |       |
|              | Génisse              | -1,85%       | -2,64%        | -2,73%        | -2,31%        | -1,91%        | -1,45%        | -1,10%        | -2,17%        |               |       |       |
|              | JB 8-12 mois         | -5,28%       | -7,73%        | -8,38%        | -9,08%        | -7,86%        | -7,51%        | -7,19%        | -7,13%        |               |       |       |
|              | <b>Total VIANDE</b>  |              | <b>-1,19%</b> | <b>-1,79%</b> | <b>-2,60%</b> | <b>-3,09%</b> | <b>-3,03%</b> | <b>-2,79%</b> | <b>-2,70%</b> | <b>-3,16%</b> |       |       |
| <b>Total</b> |                      | <b>0,01%</b> | <b>0,20%</b>  | <b>-0,35%</b> | <b>-0,90%</b> | <b>-1,03%</b> | <b>-1,06%</b> | <b>-1,26%</b> | <b>-1,79%</b> |               |       |       |

## Evolutions hebdomadaires du nombre de têtes de gros bovins

--- Moyenne 2022-2024

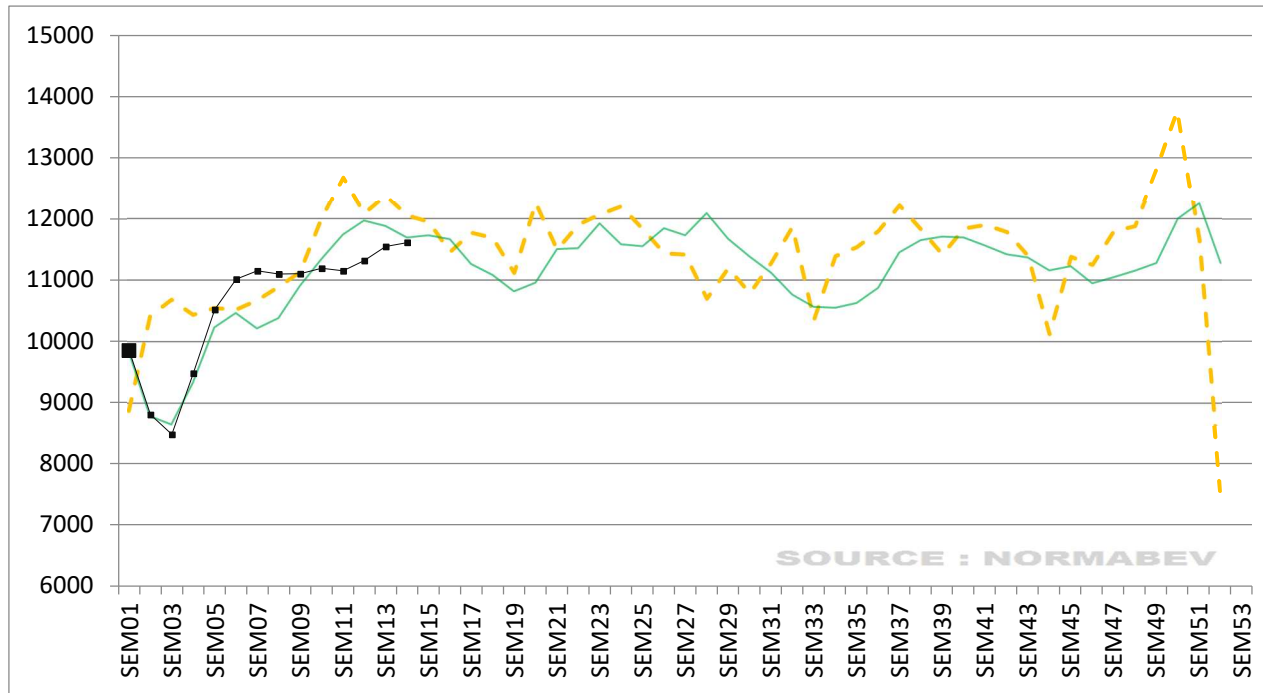
— Moyenne mobile 4 semaines 2025

— Moyenne mobile 4 semaines 2026



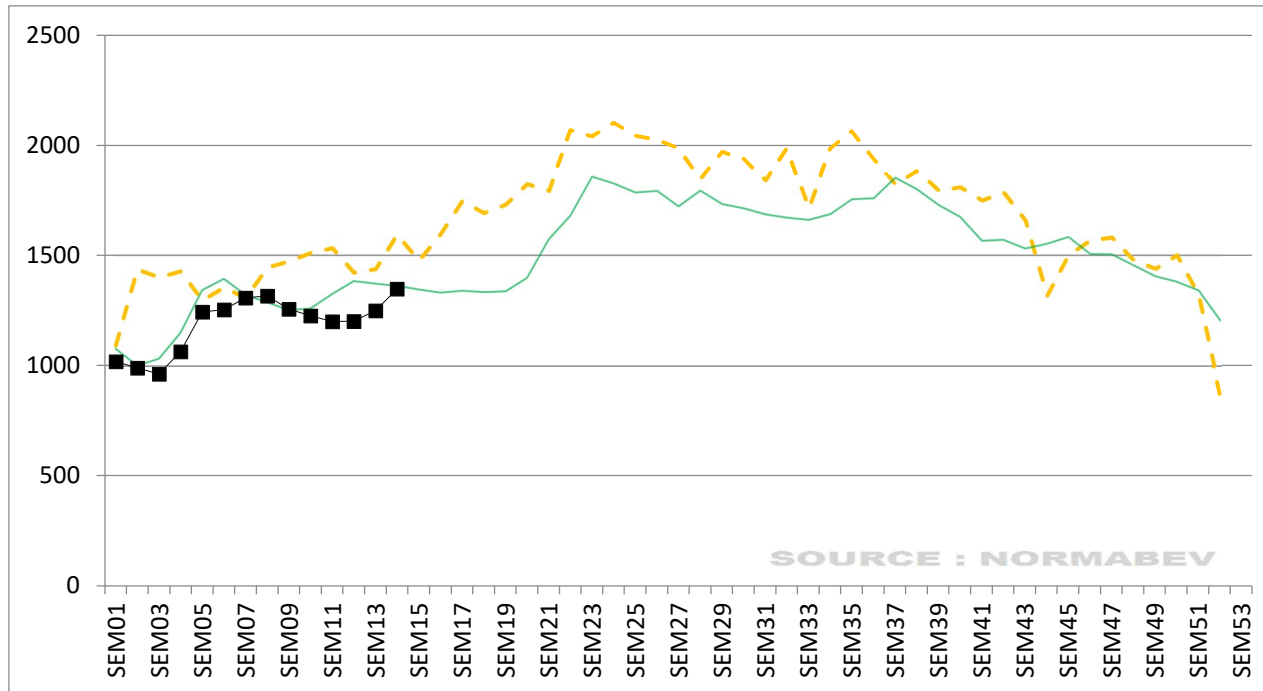
## Evolutions hebdomadaires du nombre de têtes de JB viande

- Moyenne 2022-2024
- Moyenne mobile 4 semaines 2025
- Moyenne mobile 4 semaines 2026



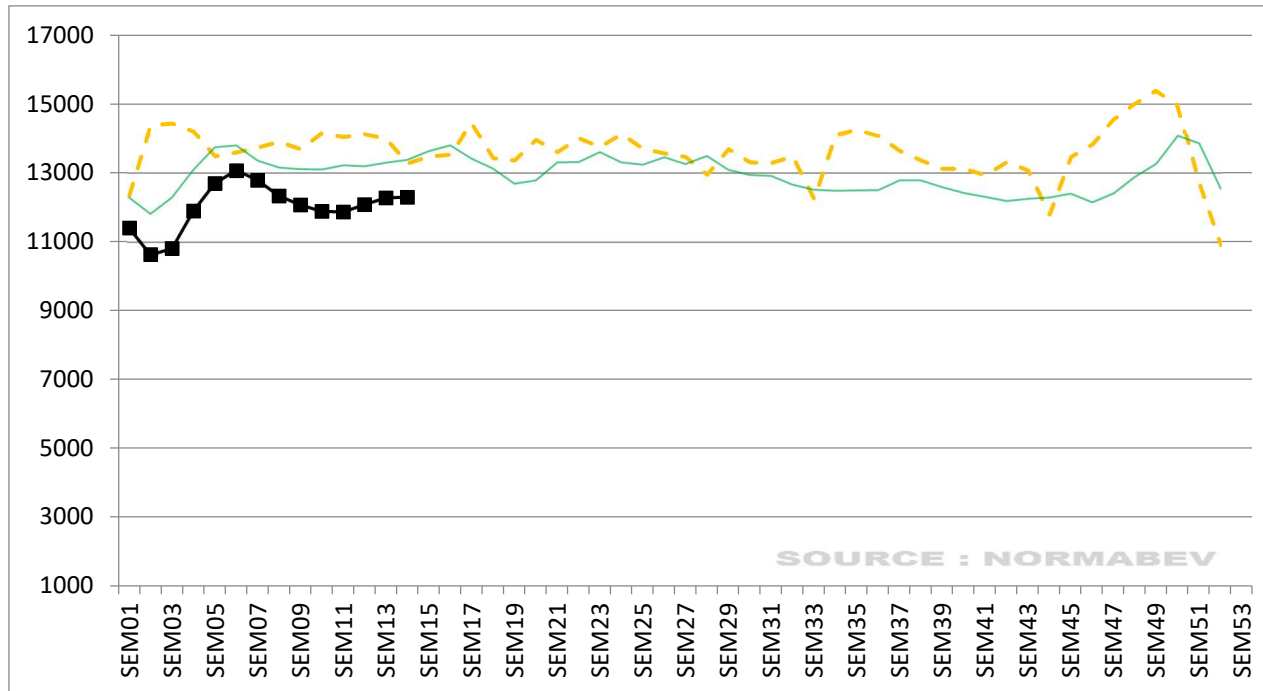
## Evolutions hebdomadaires du nombre de têtes de JB laitiers

- Moyenne 2022-2024
- Moyenne mobile 4 semaines 2025
- Moyenne mobile 4 semaines 2026



## Evolutions hebdomadaires du nombre de têtes de Vaches viande

- Moyenne 2022-2024
- Moyenne mobile 4 semaines 2025
- Moyenne mobile 4 semaines 2026

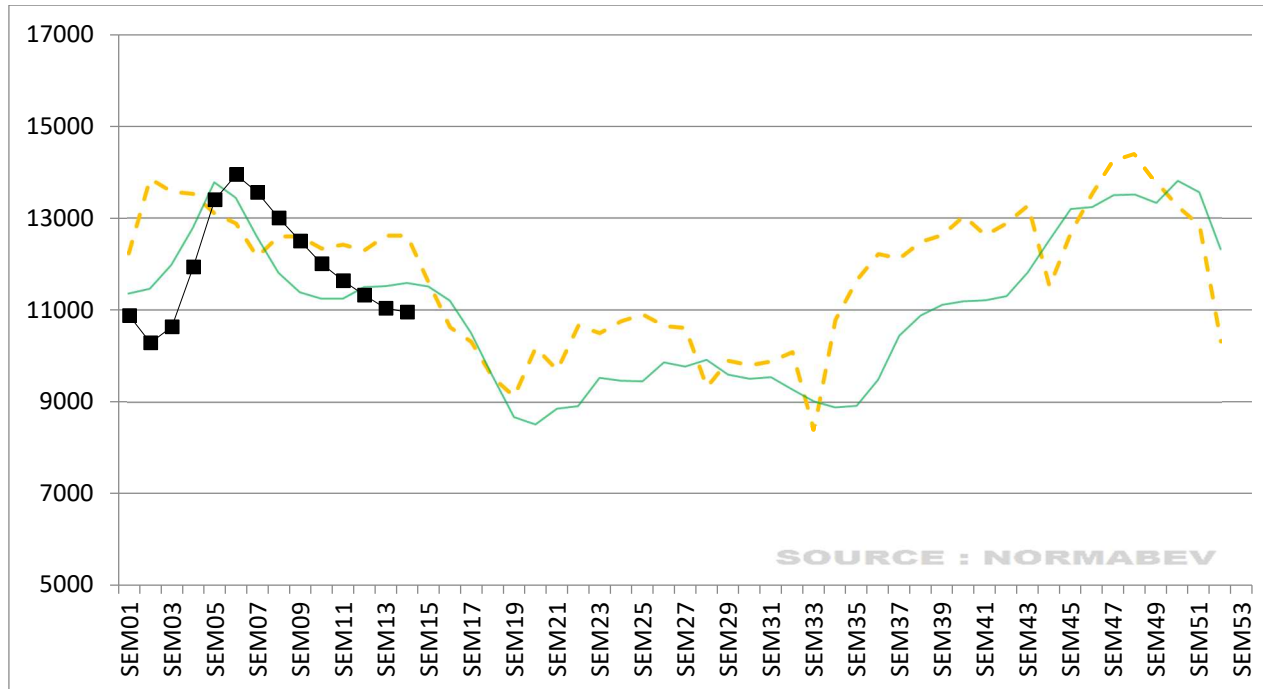


## Evolutions hebdomadaires du nombre de têtes de Vaches laitières

--- Moyenne 2022-2024

— Moyenne mobile 4 semaines 2025

— Moyenne mobile 4 semaines 2026

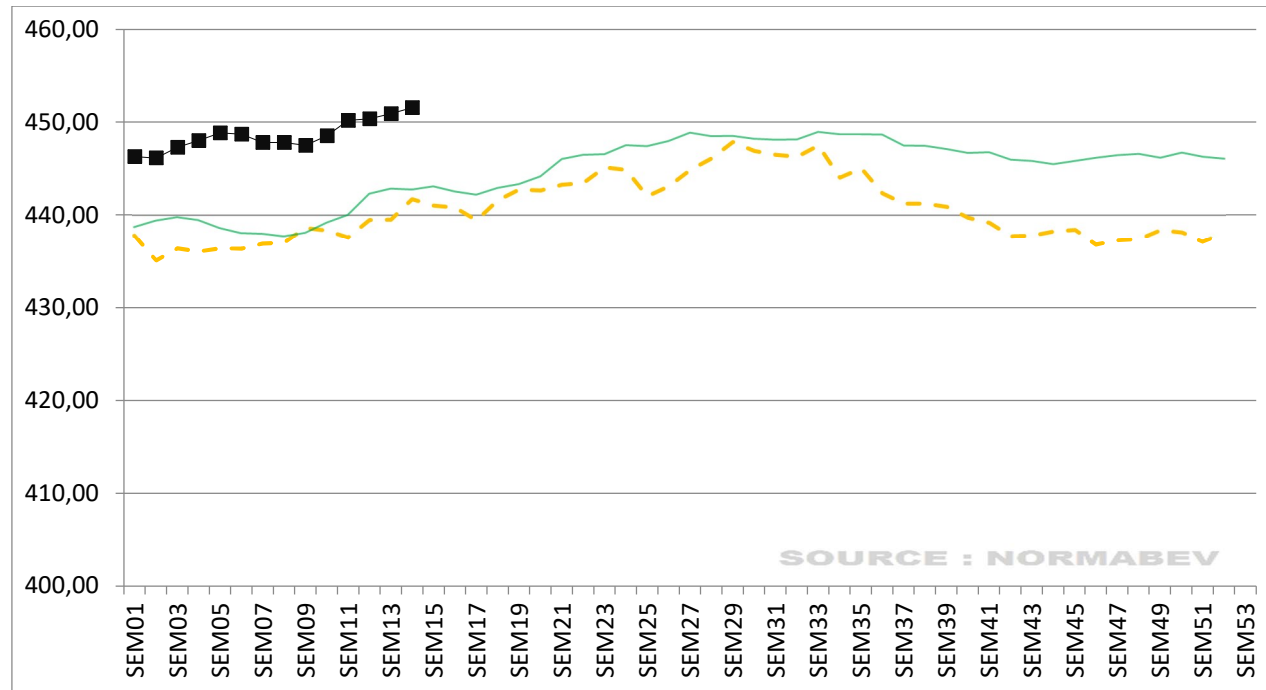


## Evolutions hebdomadaires du poids moyen des JB viande

--- Moyenne 2022-2024

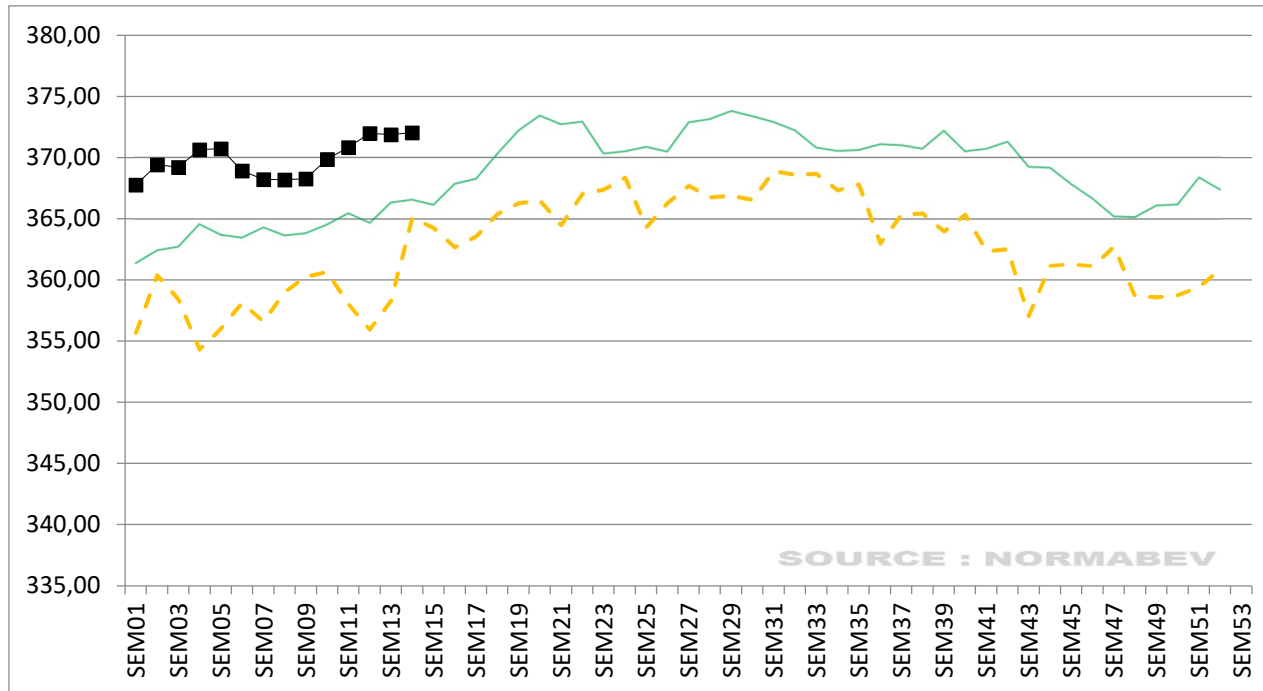
— Moyenne mobile 4 semaines 2025

— Moyenne mobile 4 semaines 2026



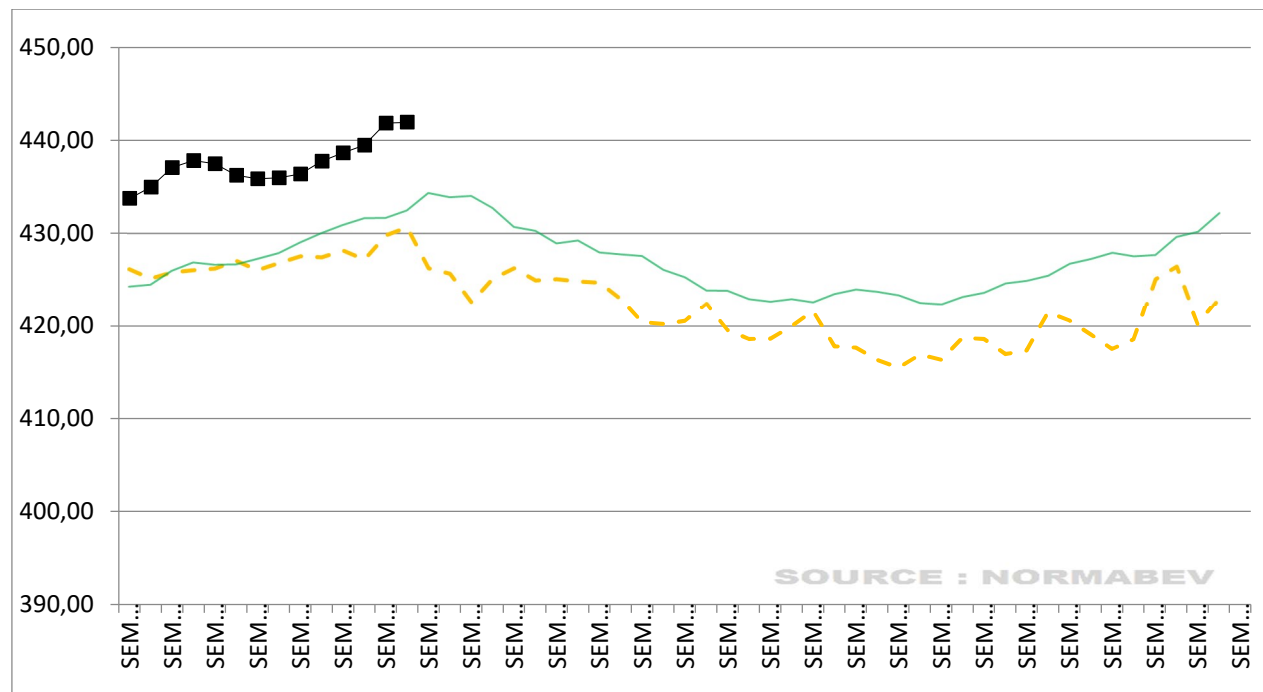
## Evolutions hebdomadaires du poids moyen des JB laitiers

- Moyenne 2022-2024
- Moyenne mobile 4 semaines 2025
- Moyenne mobile 4 semaines 2026



## Evolutions hebdomadaires du poids moyen des Vaches viande

- Moyenne 2022-2024
- Moyenne mobile 4 semaines 2025
- Moyenne mobile 4 semaines 2026



## Evolutions hebdomadaires du poids moyen des Vaches laitières

--- Moyenne 2022-2024

— Moyenne mobile 4 semaines 2025

— Moyenne mobile 4 semaines 2026

